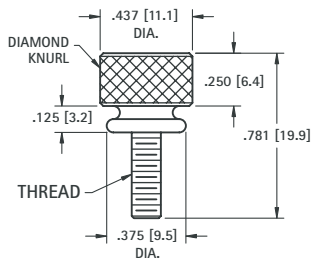


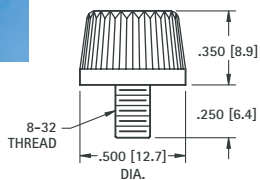
THUMB SCREWS

For quick removal of panel from chassis. Other variations available



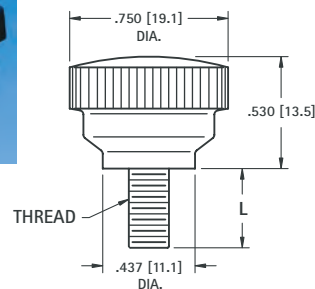
CAT. NO.	THREAD
1708	6-32
1709	8-32
1710	10-32

MATERIAL: Brass, Nickel Plate



CAT. NO. 1711

MATERIAL:
Knob: Phenolic
Stud: Steel, Zinc Plate



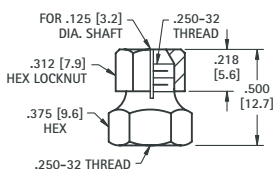
CAT. NO.	L	THREAD
1712	.375 (9.5)	10-24
1720	.500 (12.7)	.250-20

MATERIAL:
Knob: Phenolic
Stud: Steel, Zinc Plate

SHAFT LOCKS

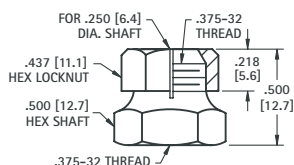
MATERIAL: Brass, Nickel Plate

For .125 (3.2) SHAFT



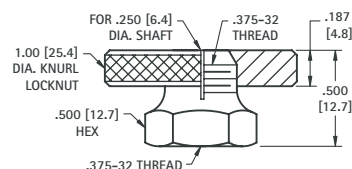
CAT. NO. 1700

For .250 (6.4) SHAFT



CAT. NO. 1701

For .250 (6.4) SHAFT



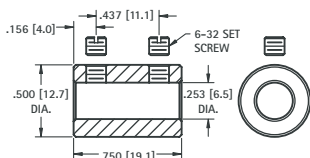
CAT. NO. 1702

.250 (6.4) SHAFT COUPLING



• Two set screws hold shaft securely

MATERIAL: Brass, Nickel Plate
Supplied unassembled

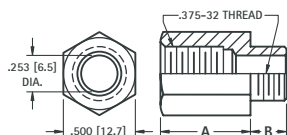


CAT. NO. 1453

VOLUME CONTROL EXTENDERS



For .250 (6.4) volume control shafts having .375-32 threaded bushings.

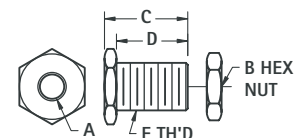


CAT. NO.	A	B
1464	.625 (15.9)	.250 (6.4)
1465	.625 (15.9)	.375 (9.5)
1466	.687 (17.4)	.500 (12.7)
1467	.750 (19.1)	.250 (6.4)

MATERIAL: Brass, Nickel Plate

PANEL BEARINGS

STANDARD and MINIATURE



MATERIAL: Brass, Nickel Plate
Supplied unassembled

CAT. NO.	A	B (HEX)	C	D	E THREAD
1705	.253 (6.5)	.437 (11.1)	.500 (12.7)	.437 (11.1)	.375-32 Standard
1706	.128 (3.3)	.343 (8.7)	.437 (11.1)	.375 (9.5)	.250-32 Miniature

PRECISION PANEL NUTS



For Volume Controls, Switches, Capacitors, Tip Jacks, etc.

CAT. NO.	FOR	THREAD	DIAMETER	THICKNESS
1448	Mounting	.250-32	.375 Hex	.093 (2.38)
1449	Mini. Control	.250-32	.312 Hex	.078 (1.98)
1456	Vol. Control	.375-32	.500 Hex	.093 (2.38)
1458	Switch	.468-32	.562 Hex	.078 (1.98)
1459	Switch Ring	.468-32	.625 Knurled	.062 (1.57)
1472	Filter	.312-32	.375 Hex	.093 (2.38)

MATERIAL: Brass, Nickel Plate

PANEL HARDWARE